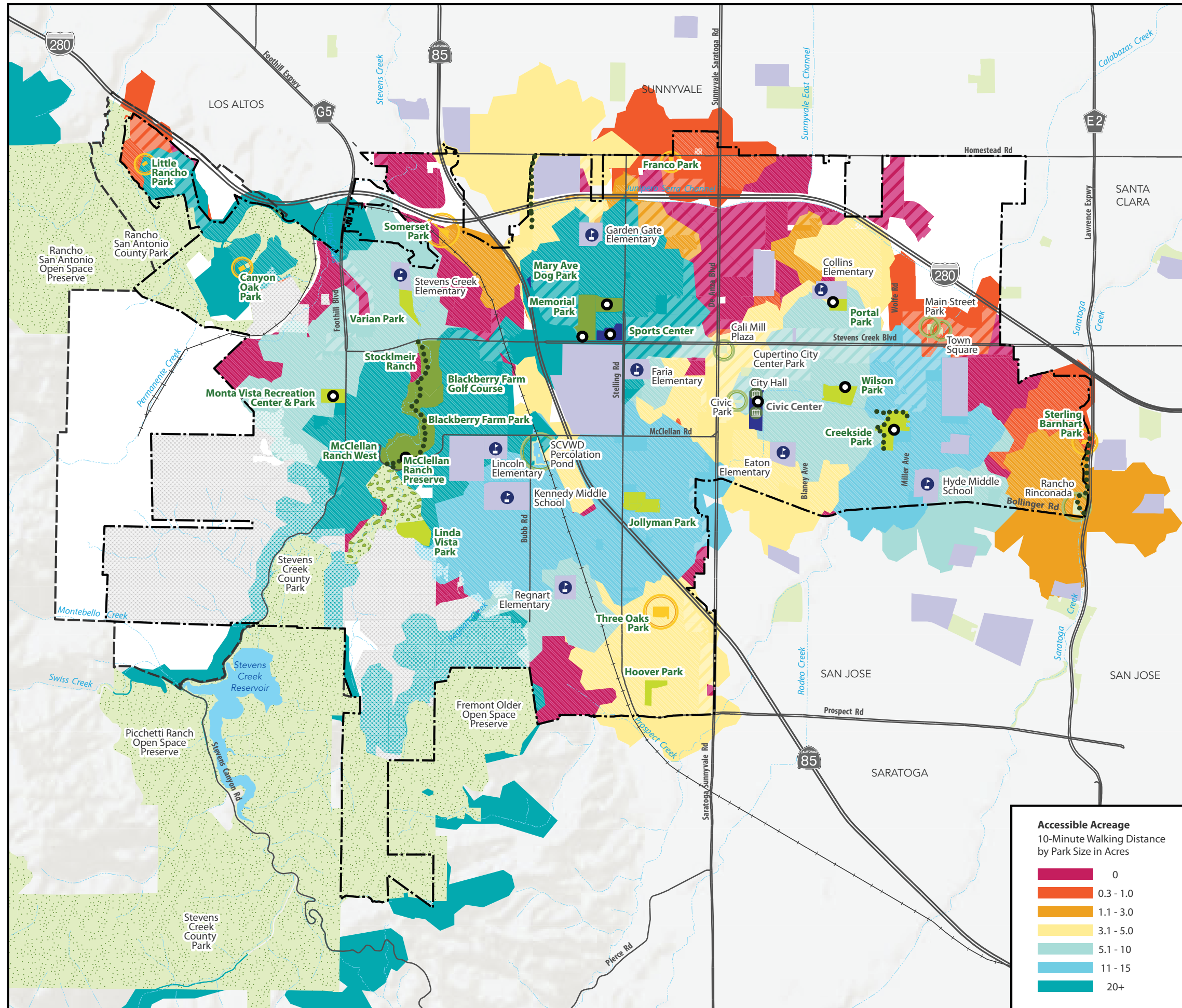




# Parks & Recreation System Master Plan

CUPERTINO

## Map 4: Access to All Public Park Acreage within a 10-minute walk



- Residential Zoning**
- Mixed-Use Development / Multi-Family Residential
  - Single Family Residential / Duplex
  - Residential Hillside / Agricultural Residential

- Cupertino Parks and Trails**
- Community Parks
  - Large Neighborhood Parks
  - Small Neighborhood Parks
  - Special Use Sites
  - School Fields Managed by City
  - Shared-Use Paths

- Other Recreation Resources**
- Local Parks Open to Public
  - County Parks & Regional Open Space Preserves
  - Schools and Colleges
  - Golf Course

- Recreation Centers/Fields**
- Recreation Centers/Facilities
  - Other Facilities

- Base Map Features**
- Cupertino City Boundary
  - Cupertino Sphere of Influence \*
  - Railroad
  - Creeks and Channels
  - Water Bodies



February 2018  
 Note: \* per Local Agency Formation Commission  
 Sources: City of Cupertino and Santa Clara County, 2017.

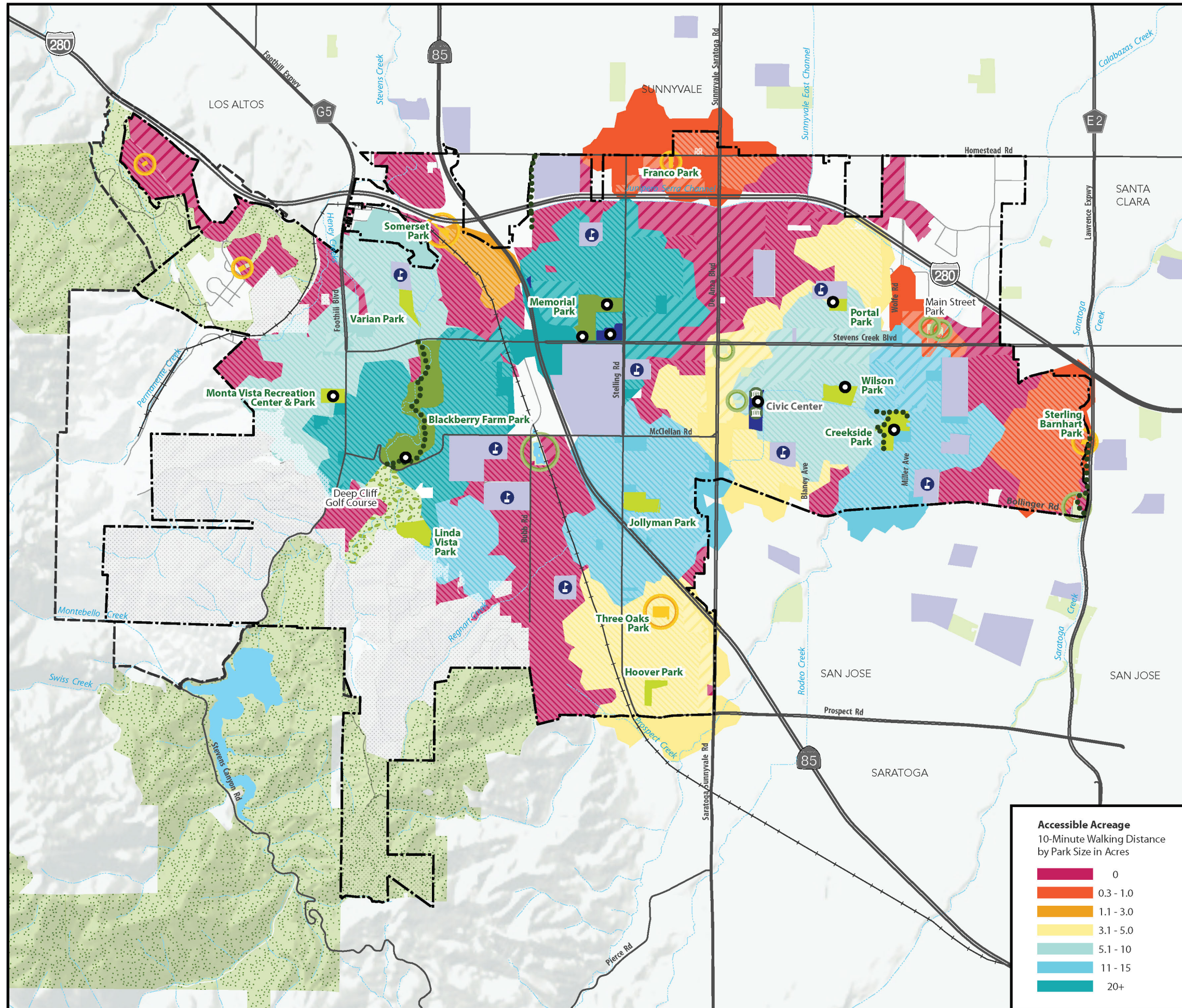




# Parks & Recreation System Master Plan

CUPERTINO

## Map 5: Access to Neighborhood-Serving Park Acreage within a 10-minute Walk



### Cupertino Parks and Trails

- Community Parks
- Large Neighborhood Parks
- Small Neighborhood Parks
- Special Use Sites
- School Fields Managed by City
- Shared-Use Paths

### Other Recreation Resources

- Local Parks Open to Public
- County Parks & Regional Open Space Preserves
- Schools and Colleges
- Golf Course

### Recreation Centers/Fields

- Recreation Centers/Facilities
- Other Facilities

### Base Map Features

- Cupertino City Boundary
- Cupertino Sphere of Influence\*
- Railroad
- Creeks and Channels
- Water Bodies

### Residential Zoning

- Mixed-Use Development / Multi-Family Residential
- Single Family Residential / Duplex
- Residential Hillside / Agricultural Residential



February 2018

Note: \* per Local Agency Formation Commission  
Sources: City of Cupertino and Santa Clara County, 2017.